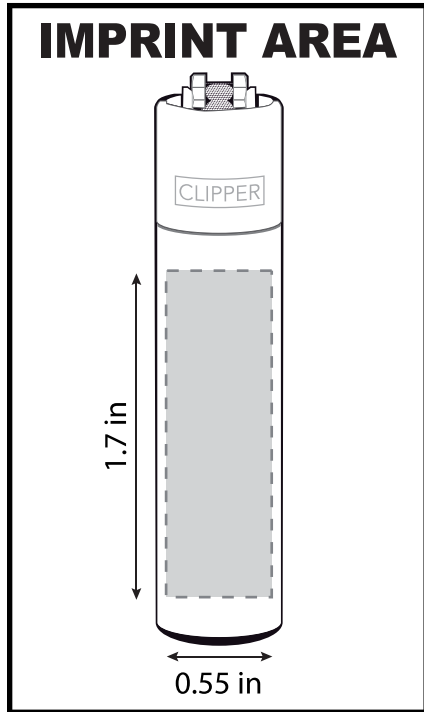


# INDIVIDUAL COLORS



## FREE PMS MATCH, UP TO 4 IMPRINT COLORS

Please review this proof for spelling, accuracy, and layout. Please tell us if this artwork is good to print. Certainly let us know if you have any corrections or concerns.

### QUALITY PRINTING GUIDELINES

**FONT SIZE (minimum): 6pt**  
*Any smaller and it could gap or bleed.*

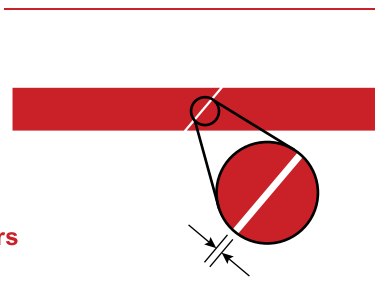
All type in your design must be AT LEAST this size

**LINE THICKNESS (minimum): 0.5pt**  
*Any smaller and it could gap or print thicker than expected*

**NEGATIVE SPACE THICKNESS (minimum): 0.7pt**  
*\*the unprinted space in between printed areas*  
*Any smaller and it could fill in.*

**NUMBER OF PRINT COLORS (maximum): 1-4 imprint colors**  
*Free PMS match, up to 4 imprint colors*

**WARNING:**  
If you do not adhere to these print specifications your print may gap or fill-in during printing.



**WHITE**  
TRANSLUCENT



PRINT COLORS:  
#1: xxx  
#2: xxx  
#3: xxx  
#4: xxx

**WHITE**  
OPAQUE



**OUT OF STOCK**

PRINT COLORS:  
#1: xxx  
#2: xxx  
#3: xxx  
#4: xxx

**BLACK**  
CHROME WINDSHIELD



PRINT COLORS:  
#1: xxx  
#2: xxx  
#3: xxx  
#4: xxx

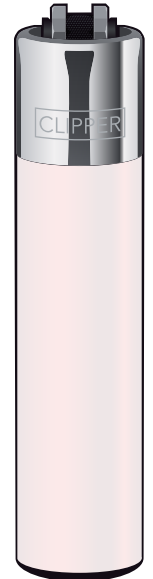
**BLACK**  
BLACK WINDSHIELD



**OUT OF STOCK**

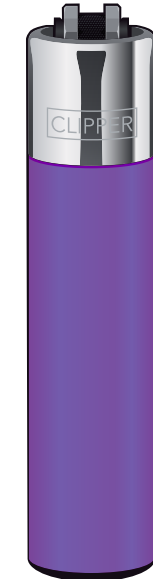
PRINT COLORS:  
#1: xxx  
#2: xxx  
#3: xxx  
#4: xxx

**RED**  
485c



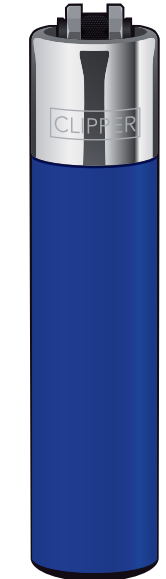
PRINT COLORS:  
#1: xxx  
#2: xxx  
#3: xxx  
#4: xxx

**GREEN**  
355c



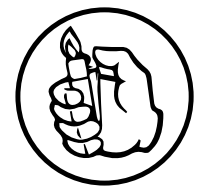
PRINT COLORS:  
#1: xxx  
#2: xxx  
#3: xxx  
#4: xxx

**BLUE**  
072c

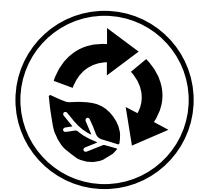


PRINT COLORS:  
#1: xxx  
#2: xxx  
#3: xxx  
#4: xxx

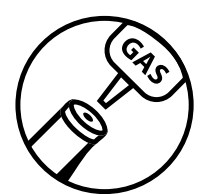
3000 LIGHTS



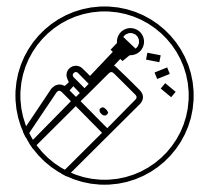
REUSABLE LIGHTER



REFILLABLE GAS



REFILLABLE FLINT



PACKING TOOL

